



ZOOBIRANGER RECRUIT PROGRAM

THE SUMATRAN TIGER

Earn your Sumatran Tiger Badge!



WELCOME, ZOOBIRANGER RECRUIT!

With this workbook in your backpack, you're on your way to becoming a Junior ZoobiRanger!

Learn about the Sumatran Tiger and the Tropical Forest Habitat in which it lives.



To earn your badge, do the following:

- Watch the Zoobitat Episode:**
 - Look for the one entitled "The Sumatran Tiger."
- Complete this Workbook:**
 - Read the information and do your best to complete the exercises.
- Check your Work:**
 - Show an adult the answers you completed.
- Earn your Badge:**
 - At the end of the course, you'll find a Badge you can print out!

LET'S BEGIN!

LEARN THE ZOOBIRANGER SALUTE!

As you've seen in the episode, Junior ZoobiRangers Jolly and Jordy do the ZoobiRanger Salute before going on an adventure. As a ZoobiRanger Recruit, you can learn it, too.

SALUTE MEANING:

With the salute, we are honoring our commitment as ZoobiRangers to:

- be protectors of the planet and the creatures upon it.
- learn what we can about wildlife conservation.
- work together as a team to make the world a healthy home for all.

HOW TO DO THE SALUTE:

First, learn the phrase that lets us all know you're ready for an adventure.

Can you say it out loud?

"ZoobiRangers at the Ready!"

Now, learn the hand actions! While standing tall, with your shoulders back, raise your right hand to your forehead, with a flat palm facing downward. Say the word, "ZoobiRangers," then salute your hand forward and outward, saying "at the ready!"

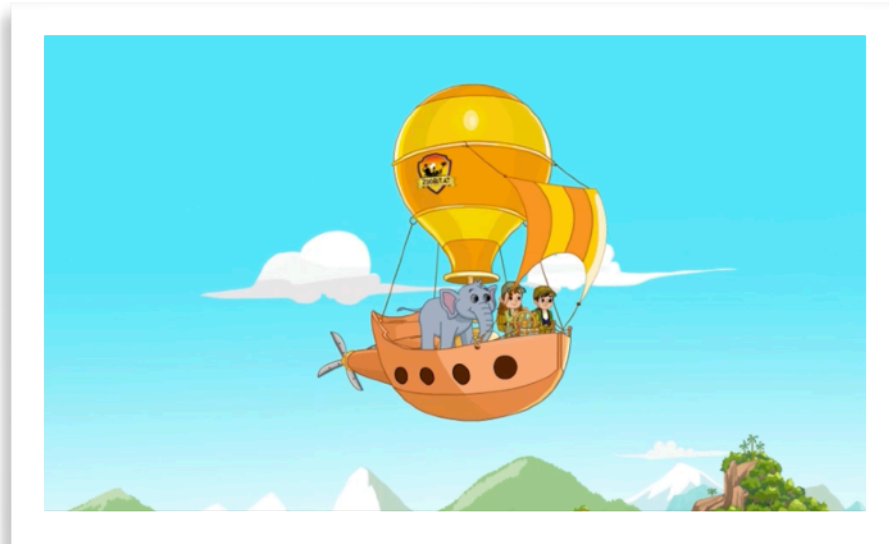
Then fold your arms, so they cross in front of you. Then lean to the side. Great work! Now try it all in one motion while saying the phrase aloud.

"ZoobiRangers at the Ready!"

EXCELLENT! YOU'RE READY FOR ADVENTURE!



TAKE A TRIP TO THE TROPICAL FOREST HABITAT!



The Sumatran Tiger comes from the Indonesian island of Sumatra, where it lives in the Tropical Forest Habitat.

Tropical Forest Habitats are generally found within 28 degrees North and South of the Equator.

But do you know what the Equator is?

The Equator is an imaginary line that spans the planet Earth at the center point between the North and South Poles.

You can think of the Equator as a belt that circles the mid-section of the planet, marking the division between the Northern Hemisphere and the Southern Hemisphere.

The Equator area, or Equatorial Region, is known for having hot daily temperatures.

In fact, the Tropical Forests in this region tend to have temperatures ranging from 65 degrees Fahrenheit (20 degrees Celsius) to 95 degrees Fahrenheit (35 degrees Celsius).



Tropical Forest Habitats are also known for their high levels of rainfall. They generally receive approximately 79 inches of rainfall per year.

That's over 6 feet of rain!

The high heat combined with the high level of rainfall causes Tropical Forest Habitats to be muggy and humid. The air is rich with moisture.

This warm, moist environment is ideal for animal and plant growth.

In fact, an estimate 80% of all the world's species can be found in Tropical Forests, even though they only cover 6% of the planet's land surface.

Here are some common animals you'll find the Tropical Forest Habitat:

- ☑ Mountain Gorillas
- ☑ Sloths
- ☑ Jaguars
- ☑ Tigers
- ☑ Macaw Parrots
- ☑ Blue Morpho Butterflies

Use the information above to answer the below questions.

1. In which Habitat can the Sumatran Tiger be found?

- A. Marine Habitat
- B. Tropical Forest Habitat
- C. Tundra Habitat
- D. Your Kitchen
- E. All the Habitats

2. The Equator line divides the planet into two halves. What are these halves called?

- A. Up and Down
- B. Left and Right
- C. Northern Hemisphere and Southern Hemisphere
- D. Cold Hemisphere and Hot Hemisphere
- E. Eastern Hemisphere and Western Hemisphere

3. What are some common environmental conditions in the Tropical Forest Habitat. Circle all that apply.

- A. Snowy
- B. Rainy
- C. Humid
- D. Warm
- E. Cold

4. Which of the following animals are common to the Tropical Forest Habitat. Circle all that apply.

- A. Penguins
- B. Macaw Parrots
- C. Sloths
- D. Tigers
- E. Party Animals

5. Unscramble the below letters and fill in the blank spaces to spell words that relate to the Tropical Forest Habitat.

◆ D U H I M --> _ _ _ M _ _ _

◆ U A Q O E T R --> _ Q _ _ _ _ _ R

◆ R U J G A A --> _ A _ _ _ _ _

◆ L A I N A R F L --> _ A _ _ _ F _ _ _ _

◆ O I S T M --> _ _ _ I _ _ _

6. Draw a belt around the planet Earth where the Equator line should be!



SAUNTER OVER TO THE SUMATRAN TIGER!



Believe it or not, the Sumatran Tiger belongs to the same Family as your regular house cat. But Sumatran Tigers are much larger than house cats. In fact, the average Sumatran Tiger weighs 280 pounds, and is almost 8 feet long. Not exactly the type of kitty you'd have on your lap!

Despite its large size, the Sumatra Tiger is actually the smallest species of Tiger in existence.

They are famous for their dark orange fur, which is marked by deep black stripes. While they're mostly orange and black, some Sumatran Tigers range in color from orange to a reddish-brown.

With more stripes than any other Tiger, their marking are known to sometimes overlap and appear quite close together in narrow strips.

And, if you ever look a Sumatran Tiger in the eyes, you'll be amazed to notice that they have bright yellow eyes.

You'll also notice that their neck has a short mane of hair, and that their whiskers are quite long.



How and What Does a Sumatran Tiger Eat?

Sumatran Tigers are Carnivores, which means they eat meat. They acquire this meat by hunting other animals.

When and how do they hunt? Well, they hunt primarily at night, as they have the ability to see in the dark. When hunting, they can run at speeds of almost 40 miles per hour!

That said, they only run at those speeds for a short period of time before they become exhausted. Given these physical constraints, Sumatran Tigers tend to silently stalk their prey, watching them until the moment is just right to pounce.

Once a Sumatran Tiger has made a hunting capture, they tend to feed on that piece of prey for about a week before they seek out more food. Here are some of the animals that the Sumatran Tiger feeds on:

- ◆ Deer
- ◆ Wild Pig
- ◆ Reptiles
- ◆ Birds
- ◆ Fish and more.



Sumatran Tiger Behaviors

The Sumatran Tiger tends to live a solitary life. This means, he or she lives alone, as opposed to with a group of other tigers.

Sumatran Tigers only gather with other tigers when mating. At these times, Sumatran Tigers are known to communicate by rubbing heads, roaring, purring and grunting.

After successfully mating, the baby Sumatran Tigers are known as “Cubs.”

As for their other behavior, the Sumatran Tiger is mostly nocturnal, which means it's awake during the night and rests during the day.

Tigers are very skilled at walking through the Tropical Forest Habitat at night, given their unique eyes, which allow them to see better in the dark.

In addition, the Sumatran Tiger's long whiskers serve as a detection system, alerting their bodies to various leaves and tree branches that surround them.

Making their movement even more stealth, the Sumatran Tiger's striped fur pattern allows them to seamlessly camouflage into the foliage, keeping them out of sight.



Sumatran Tiger Threat Status

Sadly, the Sumatran Tiger population is under great threat. The International Union for Conservation of Nature (IUCN) has defined the Sumatran Tiger's threat level as Critically Endangered.

In fact, there are less than 400 Sumatran Tigers remaining on the planet.

The cause of this decline in population is primarily human-caused, from illegal Sumatran Tiger trade and poaching. In addition, deforestation of Tropical Forest lands has led to Sumatran Tiger's losing their homes and struggling to survive.

For these reasons, we need to keep a watchful eye on the safety and health of our Sumatran Tiger communities.



Use the information above to answer the below questions.

7. What Family does the Sumatran Tiger come from?

- A. My family
- B. My dog's family
- C. Same family as the house cat
- D. A big family
- E. The purrrrrfect family

8. How long is the average Sumatran Tiger?

- A. Two feet long
- B. Twenty feet long
- C. Eight paws long
- D. Eight feet long
- E. I need to first find a measuring tape!

**9. The Sumatran Tiger is known to be which of the following?
Circle all that apply.**

- A. Orange and black in color
- B. The largest of the Tigers
- C. The smallest of the Tigers
- D. Nocturnal
- E. A lap-cat

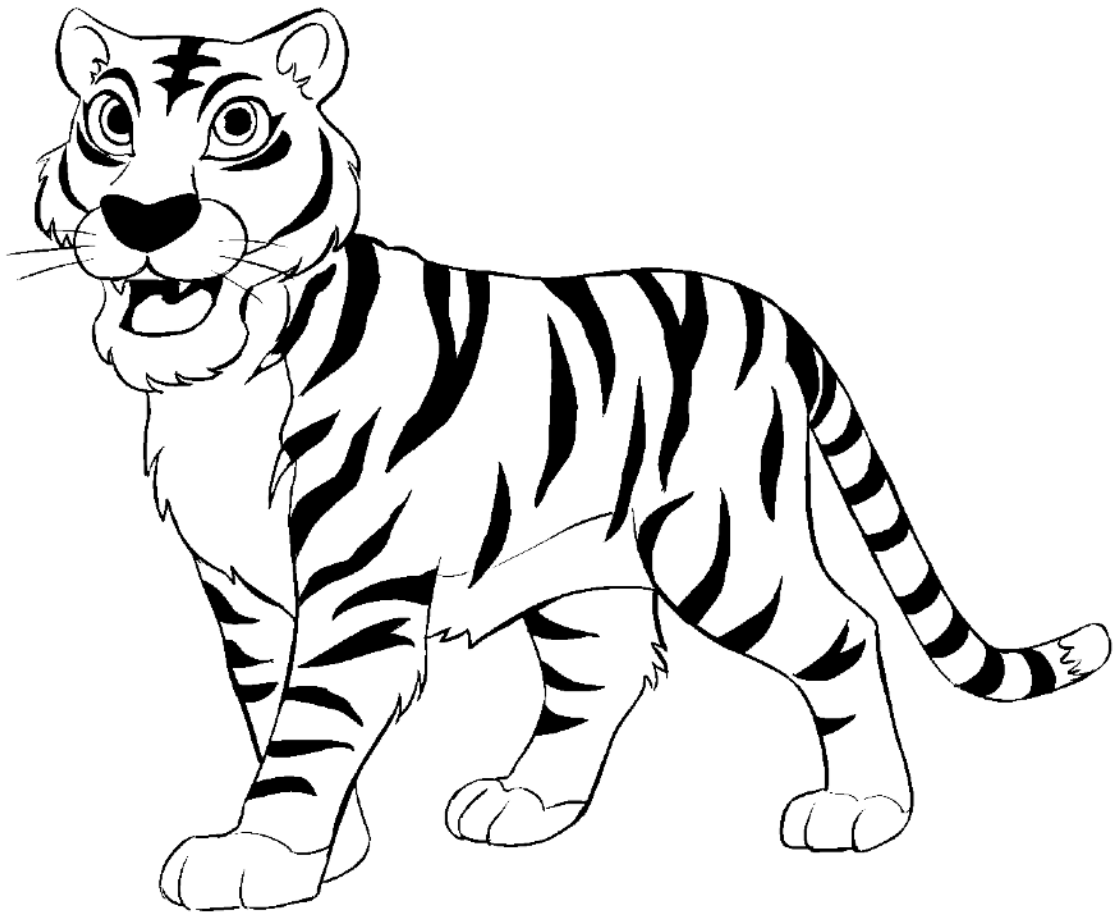
10. What do you call a baby Tiger?

- A. Adorable
- B. A tigerling
- C. A tiger chick
- D. A baby tiger
- E. A cub

11. What is a threat to the Sumatran Tiger population?

- A. Humans
- B. Deforestation
- C. Poaching
- D. Trade
- E. All of the above.

Color in the below image of the Sumatran Tiger, using orange and black for the fur, with yellow for the eyes.



WHAT EPISODE ZOOBIFACTS DO YOU REMEMBER?

12. Which vehicle do Jordy and Jolly use as they venture to the Tropical Forest Habitat?

- A. The ZoobiDune Buggies
- B. The ZoobiHang-Glider
- C. The Zoobiship
- D. The ZoobiCanoe
- E. The ZoobiMotorcycles

13. What item does Jordy plan to share with an ant?

- A. A hat
- B. A ball
- C. An umbrella
- D. Nothing
- E. ZoobiNoculars

14. Field ZoobiRanger Leila tells us how often Sumatran Tigers eat a large meal. What time period did she suggest?

- A. Once a year
- B. Once an hour
- C. Once a day
- D. Once in a blue moon
- E. Once a week

15. What is the name of the Sumatran Tiger in the episode?

- A. Tanya the Tiger
- B. Tina the Tiger
- C. Betty the Tiger
- D. Tabitha the Tiger
- E. Bertha the Beautiful

HOW TO HELP THE SUMATRAN TIGER!

Given that the Sumatran Tiger is Critically Endangered, it's important that we do our best to support and keep them safe from harm.

There are many ways to help out! Firstly, you can do your part to keep the environment clean and free from harm.

We can do this by reducing our waste in the environment and reducing our use of products that come from deforestation of Tropical Forest Habitats.

Reduce, Reuse and Recycle!

The more we're able to conserve the natural habitats of these beautiful tigers, the more likely they are to live long, healthy lives.

Another great way to help is to look in your local area for volunteer opportunities. Ask the adult in your life how you can spend some time with a local zoo, animal sanctuary, wildlife club, or environmental group. There's always a way to help out!

And most importantly, you can do your part as a protector of wildlife and our planet. Continue learning about the amazing creatures of Earth and the unique environments in which they live.

**You're on your way to becoming a
Junior ZoobiRanger.**

WE HOPE TO SEE YOU AGAIN SOON!



CONGRATULATIONS!!

**By completing this workbook, you have earned your
Sumatran Tiger Badge!**

Fill out the below info. and enjoy your badge!

Congratulations, ZoobiRanger Recruit _____
(write your name here)

As of this date _____,
(write today's date)

you have earned an official ZoobiRanger Sumatran Tiger Badge.



Cut out the badge and put it on display!

Earn your next badge with a new workbook at www.zoobitat.com

ANSWER KEY:

1. B
2. C
3. B, C, D
4. B, C, D
5. Humid, Equator, Jaguar, Rainfall, Moist
6. The line should be draw horizontally, around the horizontal mid-point of the globe.
7. C
8. D
9. A, C, D
10. E
11. E
12. C
13. C
14. E
15. B